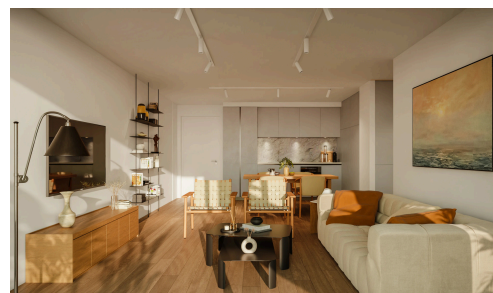


#23091



Modern Two Bedroom Apartment in Petrou Pavlou

€372,000 +VAT

 Petrou and Pavlou, Limassol

For sale off-plan, this modern apartment offers a stylish and comfortable lifestyle in the sought-after area of Petrou and Pavlou. With a generous internal space of 78 m², the apartment features two spacious bedrooms and two elegant bathrooms, designed for both convenience and privacy. Situated on the first floor of a contemporary three-story building with elevator access, it combines ease of living with modern design.

The apartment boasts an excellent city view and is part of a secure, gated complex, giving you peace of mind and a

Bedrooms

 2

Bathrooms

 2

Covered

 78 m²

Energy efficiency rating

 A

