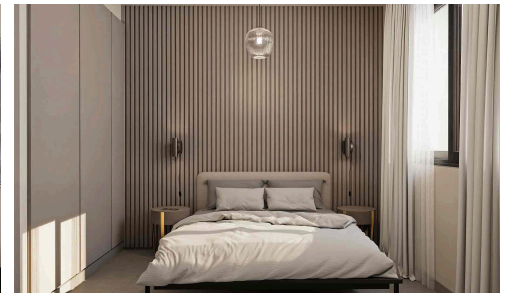


#20881



Spacious Top Floor Apartment in Peaceful Emba Area

€310,000 +VAT

📍 Emba, Paphos

For sale is an off-plan, top-floor apartment offering a generous internal space of 140.73 m². This well-designed home features two bedrooms and two bathrooms, providing ample room for both relaxation and functionality. The apartment is accessible by elevator and boasts a modern layout with energy efficiency class A, ensuring comfortable living and low utility costs year-round.

Enjoy central air conditioning and underfloor heating, making the apartment perfect for any season. Located within a

Bedrooms

🛏 2

Bathrooms

🚿 2

Covered

📏 140.73 m²

Energy efficiency rating

🌿 A

